

MONTHLY MEMBERSHIP PROGRESS REPORT

District 16 J

Results as of: 12/31/2023

GMT:

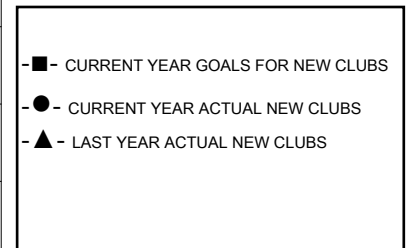
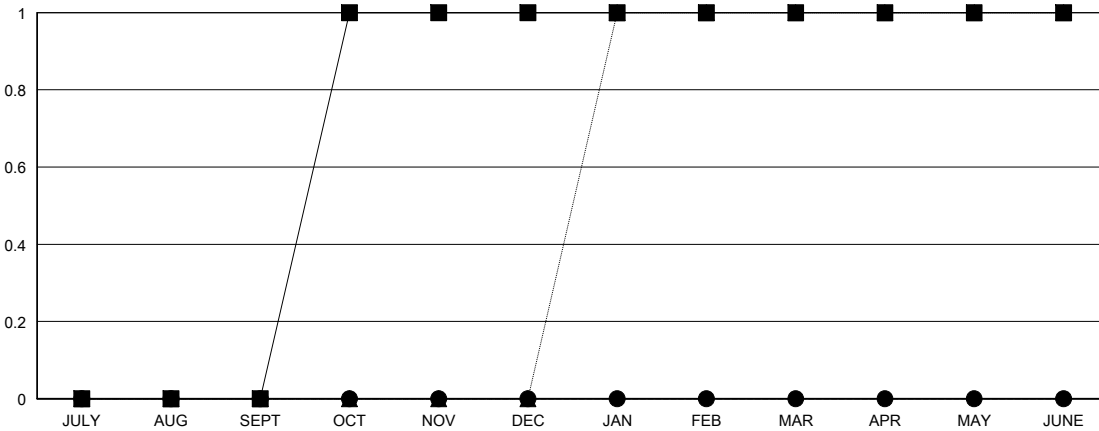
LOCATION NEW JERSEY

GMT CA

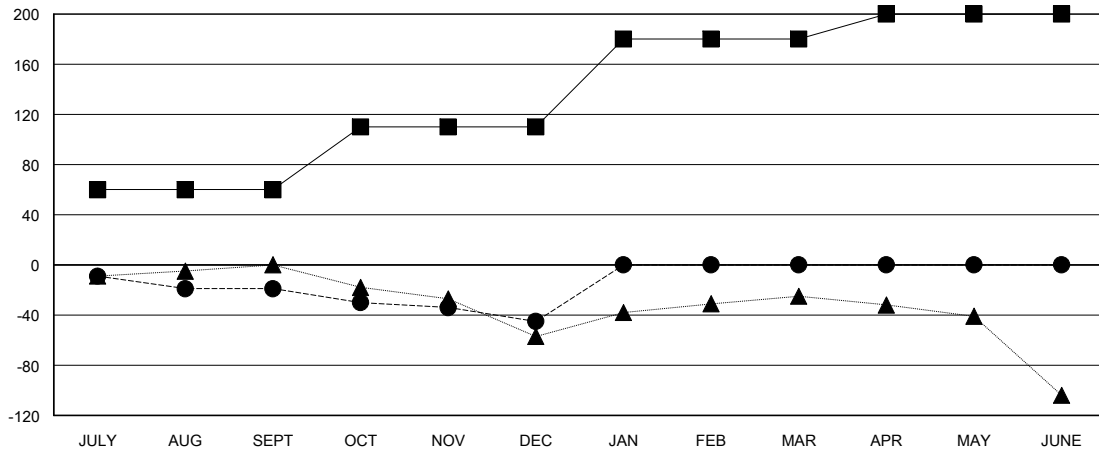
Clubs			
RESULTS FOR 2023-2024			
QUARTER	NEW CLUB GOAL	NEW CLUBS	DROPPED CLUBS
JULY/AUG/SEPT	0	0	1
OCT/NOV/DEC	1	0	2
JAN/FEB/MAR	0	0	0
APR/MAY/JUNE	0	0	0

Members			
RESULTS FOR 2023-2024			
QUARTER	MEMBER GROWTH NET GOAL	MEMBER GROWTH ACTUAL	DROPPED MEMBERS ACTUAL (including transfers)
JULY/AUG/SEPT	60	27	36
OCT/NOV/DEC	50	39	62
JAN/FEB/MAR	70	0	0
APR/MAY/JUNE	20	0	0

GOALS AND ACTUAL NEW CLUBS CUMULATIVE



GOALS AND ACTUAL MEMBERS CUMULATIVE



DROPPED CLUBS: 3	17 CLUBS OF 58 ADDED 1 OR MORE NEW MEMBERS	GENDER DISTRIBUTION MALE 807 (62.75%) FEMALE 479 (37.25%)
DROPPED MEMBERS DECEASED 4 CLUB CANCELLED 24 OTHER 70 TOTAL 98	CLICK HERE FOR CUMULATIVE MEMBERSHIP DATA	TOTAL FAMILY UNIT MEMBERS 302 FAMILY MEMBERS PAYING HALF DUES 158